

OMNI[®]

AUTO SCORING SYSTEM

USER MANUAL



TARGET

SAFETY INFORMATION

IMPORTANT PRODUCT INFORMATION

WARNING: Read the safety information before using your device. Failure to follow the safety instructions before operation may result in fire, electric shock, other injury or damage to the OMNI and accessories.

CHILD SAFETY

The OMNI has small parts including plastic and glass and may present a choking hazard. Electronic cables can present a strangulation hazard to children. Keep your device and its accessories out of reach of small children.

SAFETY INFORMATION

Your OMNI is not water resistant and only suitable for indoor use. To avoid electric shock, do not expose the device or any accessories to water or other liquids. Do not use oils, lotions or other abrasive substances to clean or polish your device or accessories.

If your device or accessories get wet, switch off the power source and carefully unplug the device and cables while keeping your hands dry. Do not attempt to dry using an external heat source such as microwave or hair dryer.

Do not disassemble, modify or open the housing of the device as this could cause injury, or damage to the device, or void the limited warranty.

Do not use third-party accessories with the device, as this may limit performance or void the limited warranty. Using third-party accessories could also cause damage to the device or the accessories.

Keep your device out of direct sunlight, and handle with care. Do not drop the device, as this can cause damage.

WARRANTY PROVIDER

12-month Return to Base Warranty provided by:

Target Sports Ltd,
Ground Floor, KAO 2, KAO Park,
London Road,
Harlow CM17 9NA
United Kingdom

Telephone - +44(0) 3300 587120
Email - ftr@target-darts.co.uk

PRODUCT SPECIFICATIONS

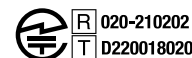
Device Name: TARGET OMNI SCORING SYSTEM
Model Number: 460011
Electrical Rating: 3A, 12V
Temperature Rating: 0 – 35°C
Wireless Features: 2.4 GHz, 5.0 GHz, IEEE 802.11 b/g/n/ac wireless.

WEEE STATEMENT

The symbol on the device and any accompanying documents showing a crossed-out wheelee bin signifies that the product should not be disposed as part of household waste. Disposing of this product correctly can save natural resources and prevent adverse effects on human health and the environment caused by improper handling of waste.

As a producer of Electrical and Electronic equipment (EEE), Target Sports Ltd is subject to Waste Electrical and Electronic (WEEE) regulations. Target Sports Ltd is obliged according to these regulations to offer customers a free return of their product on a like-for-like basis when buying a new piece of Electrical and Electronic equipment (EEE) from us. This is only valid within the European Union. For customers outside of the EU, please refer to the next section.

Pertinent to the Japanese Market



電波法により5GHz帯は屋内使用に限ります。

RESPONSIBLE DISPOSAL

Follow local environmental and transport regulations when moving or disposing of the device or accessories. Do not dispose of them in household waste, as this may cause injuries or damage. Do not crush, open, heat or incinerate the device or accessories.

ASSEMBLING YOUR OMNI SCORING SYSTEM

PARTS LIST

- A** 1x OMNI ring light
- B** 1x OMNI processing box
- C** 4x OMNI magnetic legs
- D** 1x OMNI power supply (3.0m)
- E** 1x Country adapter UK/EU/AU/JP&US
- F** 1x OMNI power cable for MOD Hub (0.4m)
- G** 10x OMNI legs and processing box Screw (M4x8mm)
- H** 1x Allen key (2.5mm)

Before mounting your system:

Before mounting the **OMNI** to your dartboard, ensure that your dartboard is firmly fixed to the wall. Vibrations of the dartboard lead to inaccurate scoring.

To fix your dartboard to the wall, it is recommended using stabilising feet on the back of your dartboard. If you are using the Target TOR and Aspar dartboards these are provided. Additionally turn in the screw on the back of your dartboard as deep as possible.

If you have a MOD Hub installed, we recommend you use this with the **OMNI**.

ASSEMBLY & MOUNTING

1. Place the ring light **(A)** front side down on a flat surface. Remove camera protection stickers from all 4 cameras.
2. Screw the **OMNI** magnetic legs **(C)** with the provided allen key **(H)** to the **OMNI** ring light using the **OMNI** screws **(G)**.
3. Remove the warning sticker from the **OMNI** processing box **(B)**.
4. Hold the **OMNI** processing box **(B)** at a **slight angle** from the connector pins and then rotate it in towards the leg until the box makes contact with the leg.
5. The arrow on the side of the **OMNI** processing box **(B)** should align with arrow on the leg, This indicates successful connection. Keep the **OMNI** processing box **(B)** pressed against the leg and keep it tight until you have finished the next step. Otherwise, the processing box may fall.
6. Screw the processing box to the master leg with the provided allen key **(H)** using the **OMNI** screws **(G)**.
7. Plug in the LED power cable to the side of the processing box.
8. Optional: If you want to use a surround, mount it now.
9. Mount the **OMNI** to your dartboard. The **OMNI** magnetic legs **(C)** will keep the **OMNI** ring light **(A)** in place.
10. The 4 **OMNI** magnetic legs **(C)** need to be aligned with the blade lines between the numbers **9/12**, **18/4**, **15/2** and **7/16**. Please refer to the visual step-by-step guide.
11. Connect the **OMNI** power supply (3.0m) **(D)** to **OMNI** processing box **(B)** and then connect to power outlet. If using MOD Hub then use **OMNI** power cable for MOD Hub (0.4m) **(F)**

Powering the OMNI

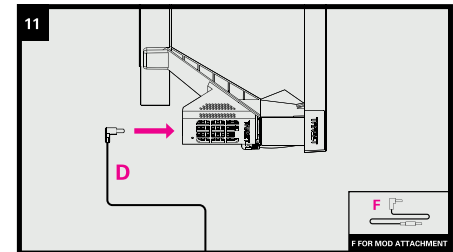
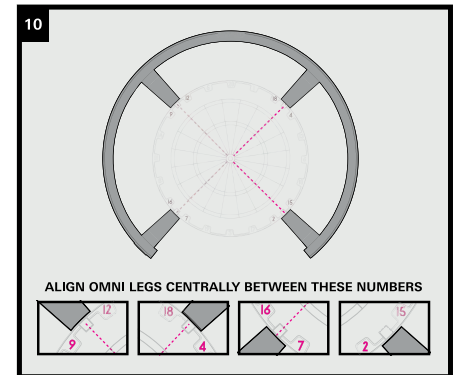
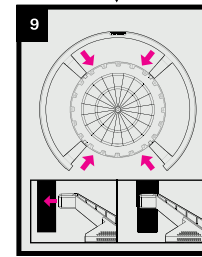
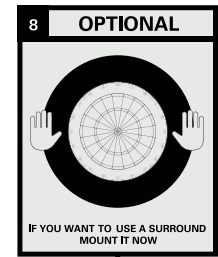
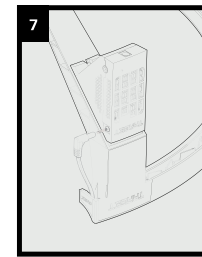
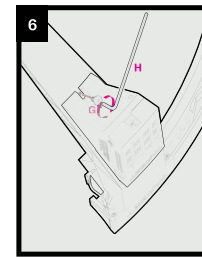
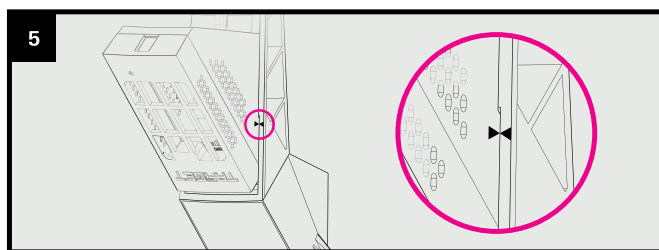
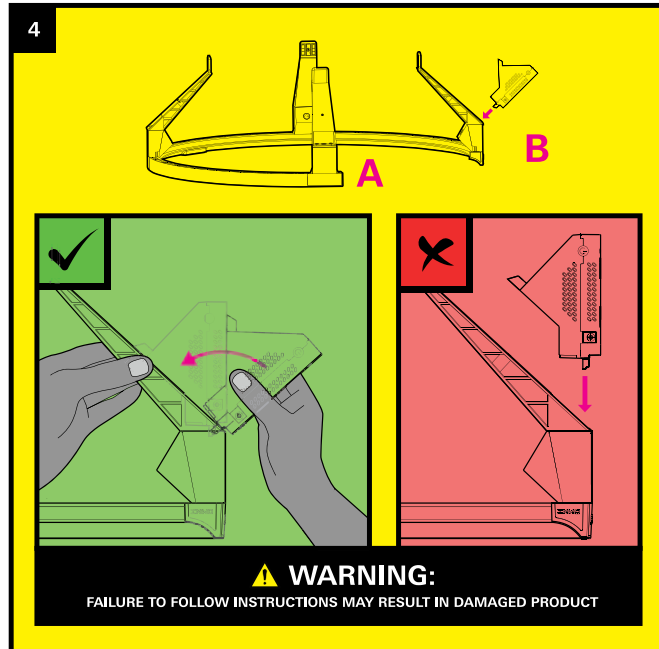
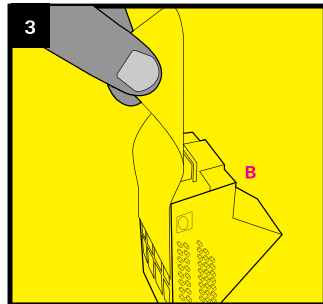
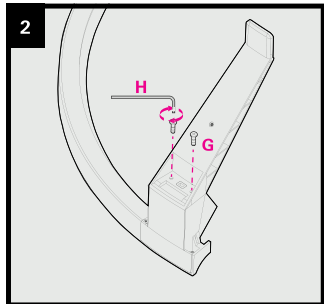
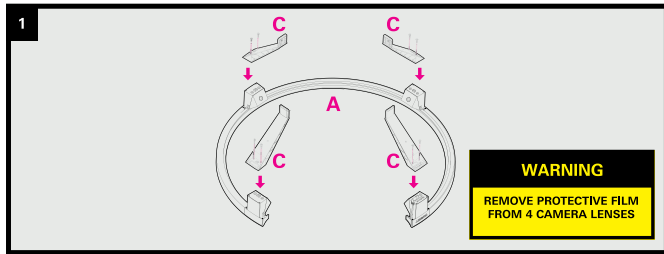
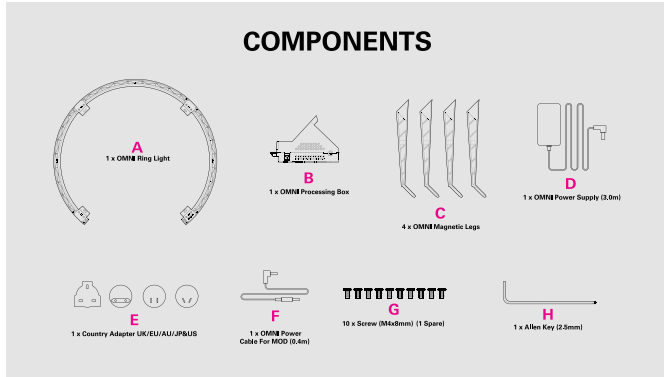
Powering the OMNI with the included power supply

Attach the correct country adapter **(E)** to the **OMNI** power supply **(D)**. Plug the **OMNI** power supply **(D)** into the outlet and the other end into the back of the processing box. Only use the included power supply to power the **OMNI**.

Powering the OMNI with the MOD Hub (sold separately)

Plug the **OMNI** power cable for MOD Hub **(F)** with the straight end into the DC1 outlet of the MOD Hub and the angled end into the **OMNI** processing box **(B)**. Do not plug in any other device in DC2.

VISUAL STEP-BY-STEP



Using your OMNI

Connecting your OMNI to your device:

Ensure that your Mobile/Tablet is connected to a WiFi network (30mbps or higher) in your device settings.

Install the DartCounter app from the Play Store or App Store, create an account and log in.

In the app, go to the menu and click Smart Devices, followed by the + button.

Select OMNI and click CONTINUE.

Follow the instructions on screen and turn the OMNI on, press the button and wait until a white light shows.

Once you have followed the steps on screen, the DartCounter app will notify that your OMNI has been successfully connected and linked to your account.

Your OMNI SCORING SYSTEM should now be visible in your list of Smart Devices on the DartCounter app. It is now linked to your account and ready for auto scoring! Before using the OMNI for the first time you will need to calibrate your system using the below Calibration Steps.

Calibrating your OMNI

To ensure the best accuracy, your dartboard needs to be calibrated. The OMNI has an automatic calibration function. This process usually takes 40 – 60 seconds.

When to calibrate your dartboard:

- Calibrate your dartboard each time you re-mount the OMNI.
- Consider calibrating your dartboard whenever your dart hits the OMNI or the ring light is altered by accident.
- You don't need to calibrate your dartboard every day but consider calibrating your dartboard again if you experience an increase in miscounts.

How to Calibrate your dartboard:

Ensure that the legs align with the corresponding blade lines (refer to visual step by step guide). Remove all darts from the dartboard. The dartboard must be empty during the whole calibration process.

Automatic calibration:

1. Select "Smart Devices" in the menu.
2. Select your connected OMNI, select "CONNECT". Status will show "CONNECTED" with a green status symbol once successful.
3. Select "Calibrate" in the DartCounter app.
4. Wait while the dartboard is being calibrated. The process takes between 40 – 60 seconds.

If you are having trouble connecting or calibrating your OMNI, follow our trouble shooting guide using the below QR code.



To turn your OMNI off, press the power button.



UK Declaration of Conformity (DoC)

We:

Company name:	Target Sports LTD
Postal address:	KAO 2, KAO Park, London Road, Harlow
City:	Essex
Postcode:	CM17 9NA
Telephone number:	+44(0) 3300 587120
Email:	info@target-darts.co.uk

declare that this DoC is issued under our sole responsibility and belongs to the following product:

Apparatus model/product:	Omni Auto Scoring System
Type:	460011

Object of the declaration:



Identification of the apparatus:

The object of the declaration described above is in conformity with the relevant Designated Regulations:

Radio Equipment Regulations 2017

The Restriction of the Use of Certain Hazardous Substances in Electrical and Electronic Equipment Regulations 2012 - EN 63000:2018

The following Designated standards and technical specifications have been applied:

ETSI EN 300 328 V2.2.2 (2019-07)
ETSI EN 301 489-1 V2.2.3 (2019-11)
ETSI EN 301 489-17 V3.2.4 (2020-09)
BS EN 55032:2015+A1:2020
BS EN 55035:2017+A11:2020
BS EN IEC 61000-3-2:2019+A1:2021
BS EN 61000-3-3:2013+A2:2021
BS EN IEC 62311:2020
IEC 62368-1:2018
BS EN IEC 62368-1:2020+A11:2020

Signed for and on behalf of:

United Kingdom
Place of Issue

28.6.24
Date of issue

Emily Heasman, Product Manager
Name, Function, Signature

EU Declaration of Conformity (DoC)

We:

Company name: Target Sports LTD
Postal address: KAO 2, KAO Park, London Road, Harlow
City: Essex
Postcode: CM17 9NA
Telephone number: +44(0) 3300 587120
Email: info@target-darts.co.uk

declare that this DoC is issued under our sole responsibility and belongs to the following product:

Apparatus model/product: OMNI SCORING SYSTEM
Type: 460011

Object of the declaration:

Identification of the apparatus:



The object of the declaration described above is in conformity with the relevant EU harmonised legislation:

Radio equipment - Directive 2014/53/EU
Restriction of the Use of certain Hazardous Substances in Electrical and Electronic Equipment (RoHS) EN 63000:2018 - Directive 2011/65/EU

The following harmonised standards and technical specifications have been applied:

ETSI EN 300 328 V2.2.2 (2019-07)
ETSI EN 301 489-1 V2.2.3 (2019-11)
ETSI EN 301 489-17 V3.2.4 (2020-09)
EN 55032:2015+A11:2020
EN 55035:2017+A11:2020
EN IEC 61000-3-2:2019/A1:2021
EN 61000-3-3:2013/A2:2021/A3:2022
EN IEC 62311:2020
IEC 62368-1:2018
EN IEC 62368-1:2020+A11:2020

Signed for and on behalf of:



United Kingdom
Place of Issue

28.6.24
Date of Issue

Emily Heasman, Product Development
Name, Function, Signature



Declaration of Conformity (DoC)

Equipment: Auto Scoring System
Trademark(s): 29/931199
Model(s): Omni Scoring System
Manufacturer: Target Sports Ltd
FCC ID in case other parts of this equipment are subject to certification: 2BFTD-460011

This device complies with Part 15.247 of the FCC Rules.

Operation is subject to the following two conditions:

- (1) this device may not cause harmful interference, and
- (2) this device must accept any interference received, including interference that may cause undesired operation.

The following test reports are subject to this declaration:

Test report number: CTA24040701201-2
Issue date: 12/04/2024

Company name: Target Sports Ltd
Name: Ekene Ofodile
Title: Chief Operating Officer
Address: 175 Portland Street, 5th Floor Boston MA 02114
Phone: (781)346-6577
Fax:
Email: Ekene.Ofodile@dartworld.com
Date: 28.6.24
Signature:



Customer Support Information

Telephone - +44(0) 3300 587120

Email - fttr@target-darts.co.uk

Product ID: 460011

Manufacturer: Target Darts
Target Sports Ltd,
Ground Floor, KAO 2, KAO Park,
London Road,
Harlow CM17 9NA
United Kingdom

Dart World US Address:
Dart World Inc.
175 Portland Street, 5th Floor
Boston MA 02114

PSU Rating: 3A, 12V
For indoor use only
FCC ID: 2BFTD-460011
Website: <https://www.target-darts.co.uk/>



Designed in UK
Made in China